



accounting business solutions

STAR-INFO

Newsletter for Sage MAS 90 and Sage MAS 200 ERP

November 2009 • Volume 9 • Issue 6

4646 Highway 6
#124
Sugar Land, TX 77478
(281) 652-5947
(281) 596-7273 fax
info@accountingbusinesssolutions.com
www.accountingbusinesssolutions.com

Headline News

On October 1 2009, Wisconsin became the 20th state to become a full member of SST (Streamlined Sales Tax). Also on this date, no less than 574 sales and use tax changes went into effect, according to an article on the Sales Tax Buzz Web site (<http://salestaxbuzz.org/>).



Authorized Partner

Customer-Requested Enhancements In Sage MAS 90 Version 4.4

The Version 4.4 release of Sage MAS 90 and 200 ERP is just around the corner. Version 4.4 includes some major customer-requested enhancements. Let's take a look.

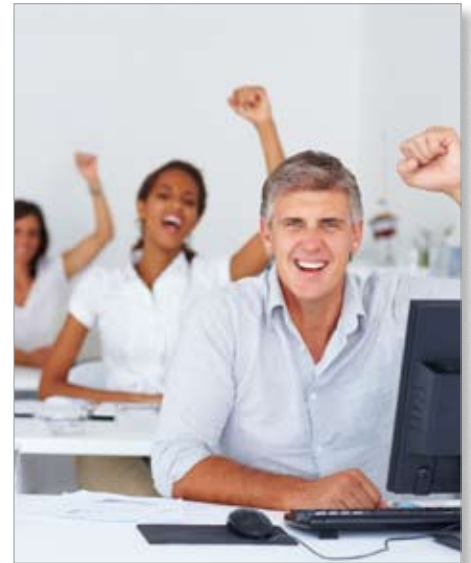
Expanded Customer Number

The Customer Number field can be expanded to 20 characters in Version 4.4. Existing customers can continue to work with the seven character customer number, however if you have ever wished you could put more intelligence into customer numbers you will be able to do so with Version 4.4. For example, if you work with organizations that have a large number of locations, the customer number could include the company name, the store number, or city to assist you in more quickly identifying a particular store.

Expanded Item Number

Similarly, you will be able to expand the Inventory Item Number field from the current 15 characters to up to 30 characters. Here again, if you have no need for a larger item number and would rather save the real estate on your screen, you can stay at 15. But if you are like many businesses, you will be pleased to be able to use the standard UPC code for the item number, or to accommodate your vendors' part numbers. You also could incorporate the original part number of a discontinued item when replacing it with a new item, and add an additional extension to associate the two items, thereby retaining the historical information.

If you are a manufacturer, you can design



smart part numbers that allow staff and customers to instantly recognize key materials used in the manufacturing process of the item. Smart part numbers also can include information that informs personnel of recycling or special handling requirements.

Streamlined Physical Count

To streamline the physical count process, in Version 4.4 the Quantity On Hand system information will be printed on the worksheet in the same sort order as what is in the system. Space is provided for the employees to record the physical item count alongside the system information as they go through the warehouse. When the physical count is complete, you can set the system quantity as the default, so that data entry personnel need only make an entry when there is a discrepancy between the system count and the physical count. Because physical count is easier, you will be

(continued on page 2)

Customer-Requested Enhancements In Sage MAS 90 Version 4.4

(continued from cover)

able to perform it more often to prevent over-ordering, reduce obsolete inventory, and help ensure that your sales staff has access to accurate inventory information.

Automated Standard Cost Adjustments

Companies using the Standard Cost method typically do so because they have raw material costs, or other costs, that fluctuate and they only want to make adjustments to their standard costs once or twice a year. When making these changes, the new Standard Cost Adjustment feature will simplify the process by automatically calculating and posting the change.

Increased Decimal Precision

The number of decimal places in the Quantity field in Inventory Management will be increased to four, making it consistent with the four decimal places in Bill of Materials. Consistency throughout the system will help reduce any rounding discrepancies when raw materials are converted to inventory items. Organizations using very small amounts of raw materials in their products, such as ink in pens, will be able to calculate usage and yields with greater accuracy.

Purchase Order

Organizations processing a large number of drop shipments will gain some significant efficiencies in Version 4.4. Additional selection criteria—Expired Order and Only With An Open Status—make it easier to identify the Sales Order from which you need to generate Purchase Orders. The new ability to summarize by primary Vendor, and select to either roll up all orders for the vendor into a single PO or create individual POs for each item will be a great time saver as well.

©Copyright 2000–2009 Tango Marketing, LLC. www.tango-marketing.com All Rights Reserved. This newsletter and its content have been registered with the United States Copyright Office. This content is licensed by Tango Marketing LLC and can be distributed by licensee until 03/30/2010 at which time the licensee must cease distribution and use of this content unless permission in writing is obtained from Tango Marketing LLC. Reproduction in whole or in part without permission is strictly prohibited. The capabilities, system requirements and/or compatibility with third-party products described herein are subject to change without notice. Sage, the Sage logos, and the Sage product and service names mentioned herein are registered trademarks or trademarks of Sage Software, Inc., or its affiliated entities. Crystal Reports is the registered trademark and technology of Business Objects S.A. All other trademarks are the property of their respective owners.

ZOOM IN



In Version 4.4 you can expand the customer number to 20 characters, allowing you to add intelligence to your customer numbers.

Bill Of Materials

In Version 4.4 the Bill of Materials Inquiry and the Where Used Inquiry will give you a comprehensive and personalized view of information with fewer keystrokes. From within the inquiry screens, you will be able to see everything related to the bill—its sub-assemblies or components—without having to go to another window, saving time and streamlining the workflow. When using the Indented option, the bill expands into a tree view, so that you can see at a glance the relationship of the component parts.

Bar Code


In Version 4.4, a new Barcode Rejection Maintenance task is added to simplify the resolution of import errors, such as invalid item codes or insufficient quantity available in a lot/serial item. Also, the Bar Code module will be able to scan both Sales Orders and Sales Order Invoices to support a variety of business process workflows. The module will support both existing scanning hardware and radio-frequency handheld devices.

Persistent Report Preview

Do you need to zoom-in to a certain level every time you pull up a report in Preview mode? With 4.4, each user will be able to set a default magnification level, so reports automatically display at the size needed.

New BIE Views

By now we hope your organization is taking full advantage of BIE (Business Insights Explorer) for powerful, easy-to-use inquiry and analysis. Views added in Version 4.4 include Item Quantities by Warehouse, Vendor History Purchases, Bill of Materials, Component Where-used, and Open PO by Vendor Name. Quick-click charts also will be available for these new views.

With this release, four more modules are being migrated to the Business Framework. As we mentioned in the last newsletter, the new Parallel Migration feature will greatly simplify the upgrade process from Version 3.71 and above to Version 4.4. Please give us a call to learn more about Sage MAS 90 and 200 Version 4.4. 

((Tips & Tricks))

Partially Disposed Assets Adjustment

For depreciation amounts in the FAS Link to be correct after partially disposing assets, you need to recalculate depreciation as follows:

1. In FAS, depreciate the assets starting in the period with the partially disposed assets. Continue depreciating up to the current period. For example, if an asset was partially disposed of in October and the current period is December, depreciate the assets for October, November, and December.
2. Expand FAS Link and Period End. Double-click Period End Processing.
3. Click Proceed.
4. Click Preview. Accumulated depreciation displays based on the revised basis instead of the original basis.